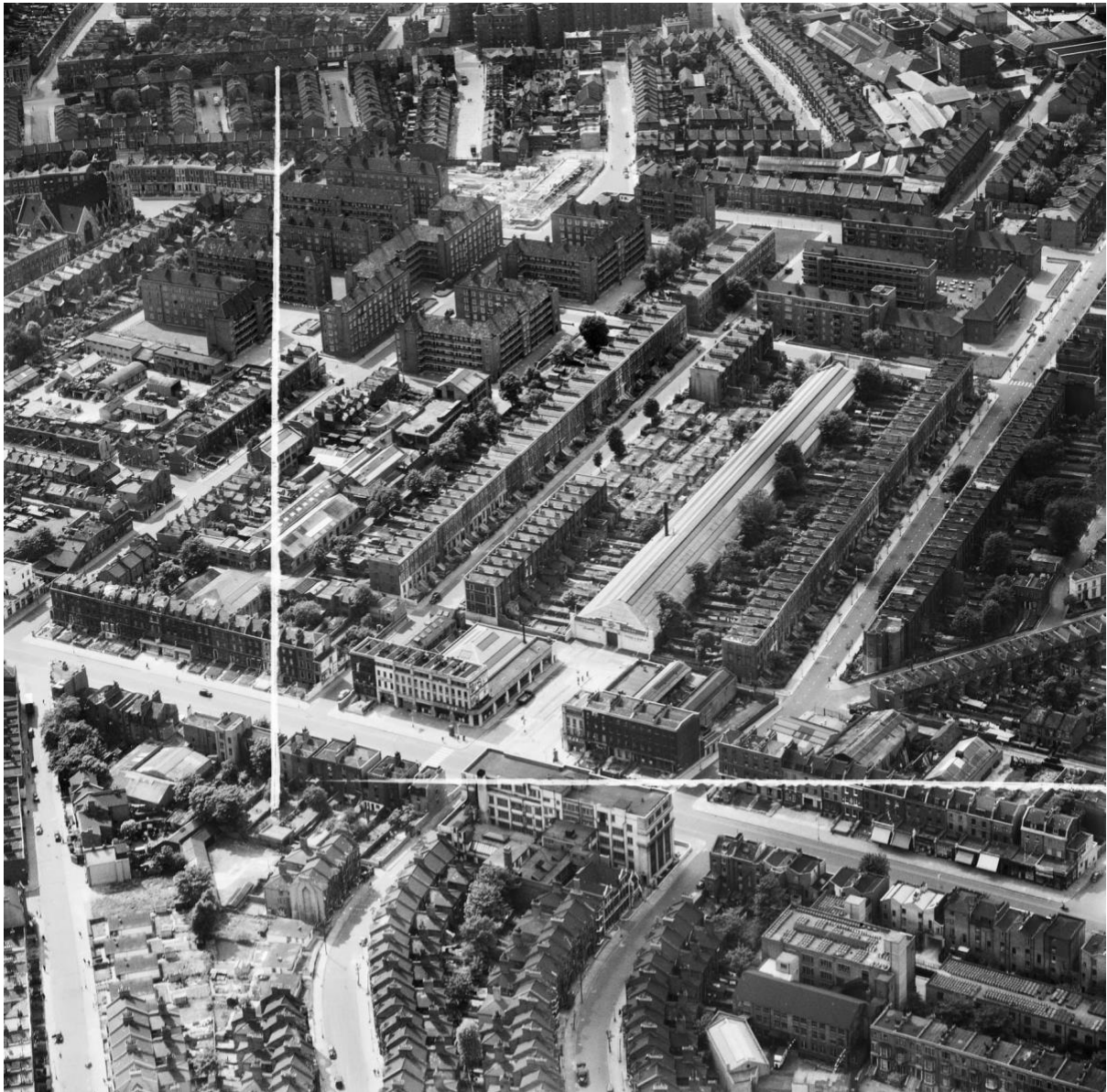
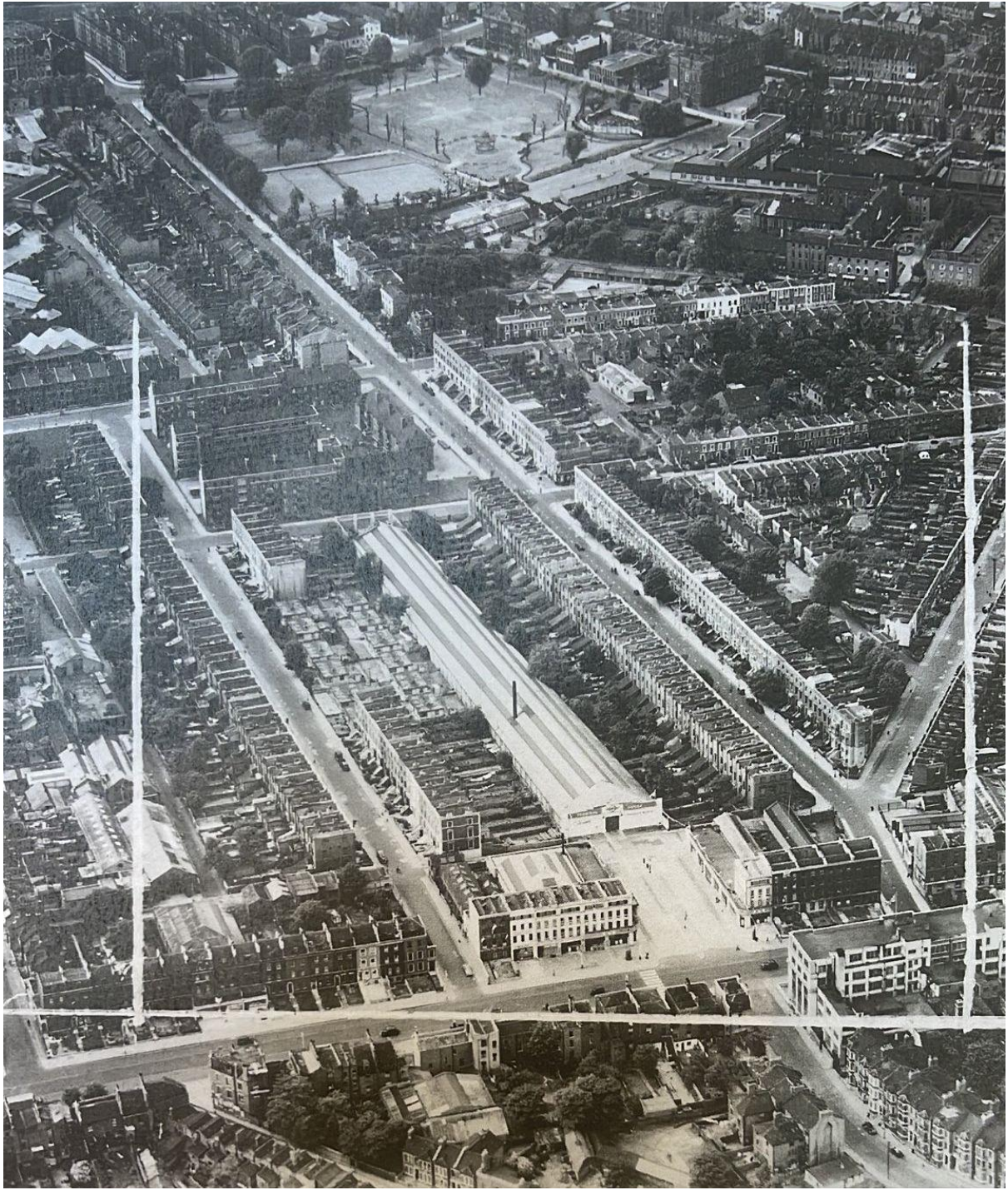


London Terminal Coach Station

Here are some further photos to supplement those on [the Vauxhall etc. website](#).







Peter Marshall



PRO

**Terminal House, Clapham Rd,
Kennington, Lambeth, 1978**

Terminal House, Clapham Rd, Kennington,
Lambeth, 1978 14r62: kennington,
lambeth, car dealer,

Terminal House, then the premises of
Vauxhall dealer Keith & Boyle, was at 80
Clapham Rd, or rather just set back from
the road in Palfrey Place. It had been built
in 1929 for use by Blue Belle Motors Ltd
who ran services to the coast but opened